

Lake Wissota PROJECT OVERVIEW

Photo base: 2025
Date: June 2026

The LWSP added the Yellow River Watershed project area in 2021 with a goal to reduce pollution 54% by 2041. The Yellow River flows into Moon Bay, which has over 200 residents that are impacted by sedimentation and algae formation.

Through this goal, the LWSP hopes to improve the quality of life and recreation on the lake, as well as improve the environment.

The LWSP is a part of the Lake Wissota Association and works heavily with the Land Conservation and Forest Management Department to get best management practices installed.

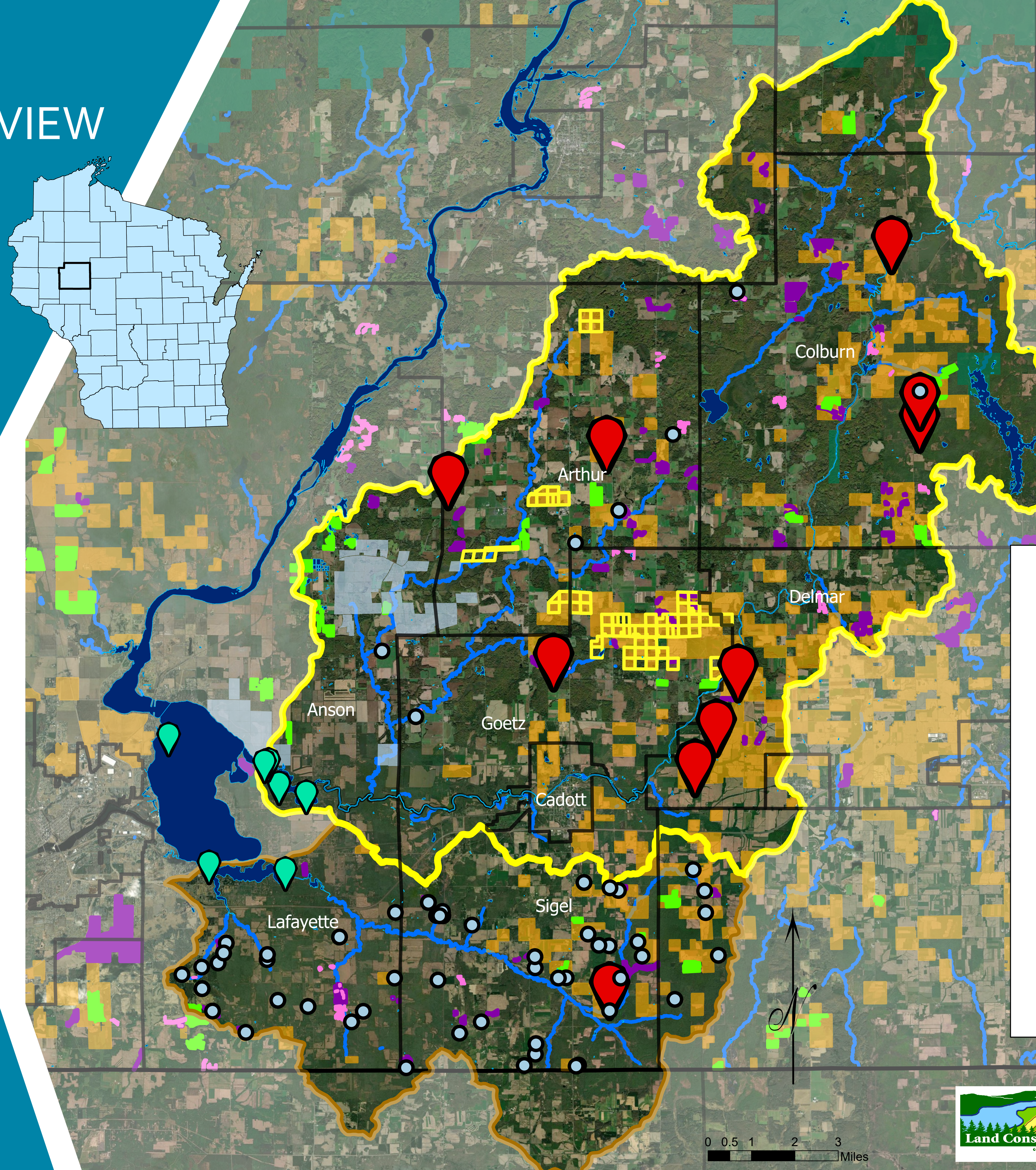
84
Projects Installed
*Since 2008

18
Years in the Watershed
*2008 - 2026

21,478
Acres Covered
*Estimated using GIS

3in
Increased Water Clarity
*Since 2007

Although a lot of progress has been made, more work still needs to be done. There are several upcoming projects designed to reduce pollution levels, including a pilot study for Biochar water remediation in the Moon Bay area, as well as continuous monitoring efforts being made to track changes and react accordingly.



Legend

- Project Locations (Past 5 Years)
- Previous Project Locations
- Active Lake Monitoring in 2025
- Agricultural Enterprise Areas
- 15-Year CREP Conservation Contracts
- Protected Lands
- Cover Crops
- Conservation Easements
- Nutrient Management Plans
- Chippewa County Forest
- Yellow River Watershed
- Little Lake Wissota Watershed
- Lakes
- Rivers & Streams
- Municipal Boundaries
- County Boundary

